

Sanitary Gauge Reducer

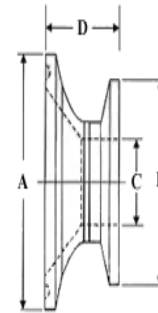
North East Precision CNC makes a Sanitary Gauge/Concentric Reducer that you won't find anywhere on the market. They are made from 316L S.S. solid bar stock. Each reducer is electropolished to a 20 RA with the heat number marked on each part. What makes our unique is the "overall length". This means it can be very useful where space is quite limited.

Contact us if a standard fitting doesn't meet your needs. North East Precision CNC can design and fabricate a custom reducer to meet your specific requirements. – North East Precision CNC 603-742-6247

Ordering Information

Please contact one of our valued distributors to place an order;

- F. W. WEBB Company, <http://www.fwebb.com/html/ri.html>
- TEK Stainless Piping Products, <http://www.tekspf.com/contactUs.jsp>
- Chadwick, Inc., <http://www.chadwickhp.com/contact.html>
- John M. Ellsworth Co., Inc., <http://www.jmesanitary.com/>



Part Number	Dimension A	Dimension B	Dimension C	Overall Length D
4001	¾"	1/2"	.370	1.250"
4002	1"	1/2"	.370	1.250"
4003	1 ½"	1/2"	.370	1.250"
4004	2"	1/2"	.370	1.250"
4005	2 ½"	1/2"	.370	1.250"
4006	3"	1/2"	.370	1.250"
4007	4"	1/2"	.370	1.250"
4008	1"	¾"	.620	1.250"
4009	1 ½"	¾"	.620	1.250"
4010	2"	¾"	.620	1.250"
4011	2 ½"	¾"	.620	1.250"
4012	3"	¾"	.620	1.250"
4013	4"	¾"	.620	1.250"
4014	1 ½"	1"	.870	1.250"
4015	2"	1"	.870	1.250"
4016	2 ½"	1"	.870	1.250"
4017	3"	1"	.870	1.250"
4018	4"	1"	.870	1.250"
4019	2"	1 ½"	1.370	1.250"
4020	2 ½"	1 ½"	1.370	1.250"
4021	3"	1 ½"	1.370	1.250"
4022	4"	1 ½"	1.370	1.250"
4023	2 ½"	2"	1.870	1.250"
4024	3"	2"	1.870	1.250"
4025	4"	2"	1.870	1.250"
4026	3"	2 ½"	2.370	1.250"
4027	4"	2 ½"	2.370	1.250"
4028	4"	3"	2.870	1.250"
4029	4"	4"	2.870	1.250"

